

Posaune

Jon Laukvik

Arabeske

Arabesk - Arabesque

Arabeske

Arabesk - Arabesque

Jon Laukvik
(2010)

Moderato (♩ ≈ 55)
sempre rubato

(I) *f* gliss. 12 *f* gliss.

gliss. *f* 12 *f* gliss.

(IV) *cresc.* *f* 12 *f* gliss.

Detailed description: This section consists of three staves of music. The first staff begins with a dynamic marking of *f* and a glissando instruction. It features a series of notes with accidentals (flats and naturals) and a fermata over the final note. The second staff continues with a glissando, followed by a *f* dynamic and another glissando. The third staff starts with a *cresc.* marking, followed by a *f* dynamic and a glissando. The number '12' is placed below the first two staves, indicating the end of the first system.

A Poco più mosso (♩ ≈ 70)

mp *poco cresc.*

mf 12 *ff*

Detailed description: This section consists of two staves of music. The first staff begins with a dynamic marking of *mp* and a *poco cresc.* instruction. It features a series of notes with accidentals and a fermata over the final note. The second staff continues with a *mf* dynamic and a *ff* dynamic. The number '12' is placed below the first staff, indicating the end of the second system.

B Vivo (♩ ≈ 105)

p *meno p*

f

C *mf*

Detailed description: This section consists of three staves of music. The first staff begins with a dynamic marking of *p* and a *meno p* instruction. It features a series of notes with accidentals and a fermata over the final note. The second staff continues with a *f* dynamic. The third staff begins with a **C** section marker and a *mf* dynamic. The number '12' is placed below the first staff, indicating the end of the third system.

D

Musical notation for section D, featuring a single staff in bass clef. The music begins with a dynamic marking of *f flz.* and concludes with *ff flz.* The notation includes various rhythmic values and accidentals.

E Tempo I°

Musical notation for section E, consisting of two staves. The top staff is in treble clef and the bottom staff is in bass clef. The tempo marking is *Tempo I°*. The notation includes various rhythmic values and accidentals.

F Moderato, a piacere, quasi recitativo

Musical notation for section F, consisting of three systems of two staves each (treble and bass clef). The tempo marking is *Moderato, a piacere, quasi recitativo*. The first system includes a dynamic marking of *p gliss.* and is marked with (I) and (II). The second system is marked with (V) and (III). The third system is marked with (II) and includes a dynamic marking of *mp* and the instruction *espressivo*. The notation includes various rhythmic values and accidentals.

G

p

(VI)

(III)

(VII)

(III)

mp

($\text{♩} \approx 55$) H

f

con sordino *molto espressivo*

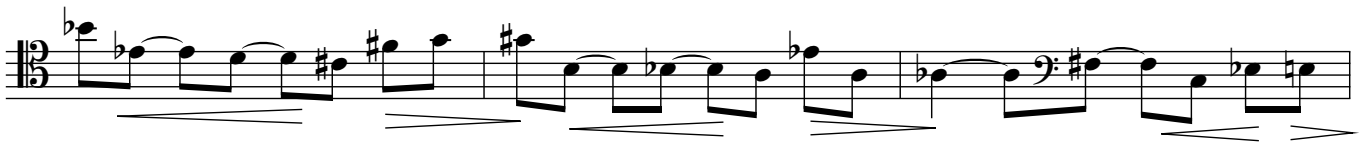
p

pp *sempre legato*

dim.

8^{va}

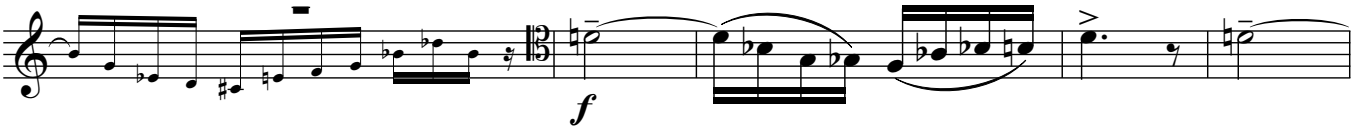
3



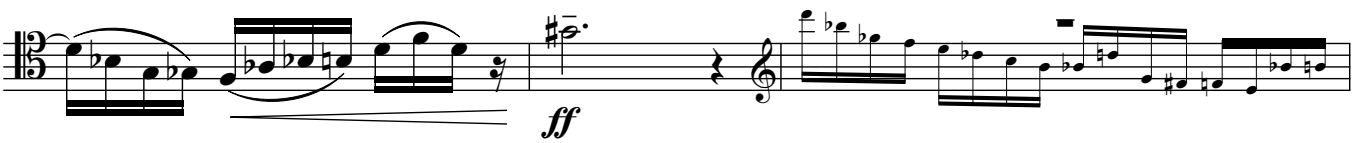
I Tempo I° (♩ ≈ 70)



senza sordino



J Poco allegro, ritmico (♩ ≈ 88)



K



L Tempo I°

f 12

f *mp* *p* *corta*

f 12 *mp*

(♩ ~ 55) **M** *espressivo* *p* *pp* *legato*

poco rit. **Tempo I°** *f* 12 *loco* *senza rit.* *(decresc. molto)*